

vtech®

User's Manual

Write & Learn Artboard™



© 2004 VTECH
Printed in China
91-02106-004 (美)

Dear **Parent**,

At **VTech**[®], we know how important the first day of school is for your child. To help prepare preschoolers for this important event, **VTech**[®] has developed the **Preschool Learning**[™] series of interactive toys.

Preschool Learning[™] features fun characters and inviting school themes that use technology to capture a child's attention and teach important preschool skills like spelling, counting and the alphabet. These vital skills are taught in a way that's both fun and highly engaging to maintain a child's interest. Children will also be introduced to fun school subjects such as art class, music class and even break time! With **Preschool Learning**[™], learning is fun from day one!

At **VTech**[®], we know that a child has the ability to do great things. That's why all of our electronic learning products are uniquely designed to develop a child's mind and allow them to learn to the best of their ability. We thank you for trusting **VTech**[®] with helping your child learn and grow!

Sincerely,

Your Friends at **VTech**[®]

To learn more about **Preschool Learning**[™] and other **VTech**[®] toys, visit www.vtech.com

INTRODUCTION

Thank you for purchasing the **VTech® Write & Learn Artboard™** learning toy! The **Write & Learn Artboard™** teaches preschoolers early writing skills in a clever, artistic way! The A to Z 'Smart Doodles' pages features letter stroke order along with creative drawings to encourage your child to learn his very first strokes. Each page is filled with educational activities to inspire imaginative minds! Learn to write right, a skill that lasts a lifetime! Just pick a crayon and start scribbling!



INCLUDED IN THIS PACKAGE

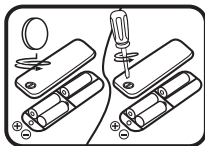
- One **VTech® Write & Learn Artboard™** learning toy
- One instruction manual
- A-Z 'Smart Doodles' wipe-off, activity pages
- Three VTech crayons

WARNING: All packing materials such as tape, plastic sheets, wire ties and tags are not part of this toy, and should be discarded for your child's safety.

GETTING STARTED

BATTERY INSTALLATION

1. Make sure the unit is **OFF**.
2. Locate the battery cover on the bottom of the unit.
3. Open the battery cover.
4. Install 3 new “AA” (UM-3/LR6) batteries into the compartment as illustrated. (The use of new, alkaline batteries is recommended for maximum performance.)
5. Replace the battery cover.



BATTERY NOTICE

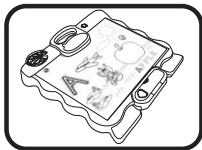
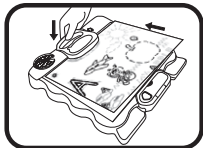
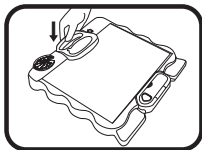
- Install batteries correctly observing the polarity (+,-) signs to avoid leakage.
- Do not mix old and new batteries.
- Do not use batteries of different types.
- Remove exhausted or new batteries from the unit when the unit will not be used for an extended period of time.
- Do not dispose of batteries in fire.
- Do not attempt to recharge ordinary batteries.
- The supply terminals are not to be short-circuited.
- Only batteries of the same and equivalent type as recommended are to be used.

WE DO NOT RECOMMEND THE USE OF RECHARGEABLE BATTERIES.

Note: Please remove the demo tag, located on the back of the product, after the product is taken out of the package. If the demo tag is still in position when you begin play, please remove it to activate the normal play mode.

Instructions to Insert 'Smart Doodles' Pages

1. Lift the paper clip.
2. Insert a 'Smart Doodles' page on the board in the correct location.
3. Release the paper clip.



PRODUCT FEATURES

1. ON/OFF BUTTON

To turn the unit on, press the **ON/OFF BUTTON**.

Press the **ON/OFF BUTTON** again to turn the unit off.



2. TOUCH-SENSITIVE DRAWING BOARD

Press the letters and objects on the board, without a page inserted into the clip. You will learn letters, objects and related sounds.

3. 'SMART DOODLES' ACTIVITY PAGES

Each 'Smart Doodles' page features letter stroke writing, learning to spell, listening to stories, object identification, related sounds and music. Once inserted into the paper clip, the 'Smart Doodles' page will be recognized and will teach related curriculum.

4. AUTOMATIC SHUT-OFF

To preserve battery life, the **VTech® Write & Learn Artboard™** will automatically turn off after several minutes without input. The unit can be turned on again by pressing the **ON/OFF BUTTON**.

5. PAGE STORAGE

On the back of the product, you can store all of your 'Smart Doodles' pages for convenience. Simply slide the pages into the holder.

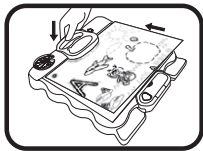
6. 22 BONUS 'SMART DOODLES' ACTIVITY PAGES

To preview additional 'Smart Doodles' activity pages, please visit our website at www.vtechkids.com and you can learn lowercase letters, animals, nature, toys, things that crawl and more! You can then order these activity pages by calling our Consumer Services Department at 1-800-521-2010 in the U.S. or 1-877-352-8697 in Canada, and a service representative will be happy to help you.

ACTIVITIES

WE RECOMMEND THE USE OF THE CRAYONS AND THE 'SMART DOODLES' PAGES INCLUDED WITH THE PRODUCT TO PLAY.

1. First, insert a 'Smart Doodles' page to begin play. Then, press the red crayon on the page to identify which page you have inserted.



2. Trace the dotted lines to learn letter stroke order while listening to a song.



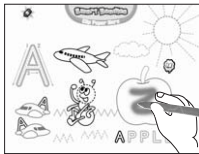
3. Press the letters to learn to spell a word. Press the objects to learn the word and its related sound.



4. Press the storybook to hear a silly story relating to the letter on the page. For example, if you press the storybook, you will hear "The baby bunny bounces his ball wearing big boots!"



5. As you draw, you will hear silly sounds, background music and fun phrases to encourage you to continue drawing and writing.



MELODY LIST

For each page, you will hear the following background melodies:

- A - Teddy Bear's Picnic
- B - Take Me Out to the Ball Game
- C - Three Little Kittens
- D - Bingo
- E - Humpty Dumpty

- F - If You're Happy and You Know It
- G - The Green Grass Grew All Around
- H - Head, Shoulders, Knees and Toes
- I - Seasons - Spring
- J - Beethoven's 5th Symphony
- K - Old King Cole
- L - Can Can
- M - Hickory Dickory Dock
- N - Flight of the Bumblebee
- O - Animal Fair
- P - Artist's Life
- Q - Rockin' Robin
- R - Camptown Races
- S - Canon in D
- T - Old MacDonald Had A Farm
- U - Jack and Jill
- V - For He's a Jolly Good Fellow
- W - Glow Worm
- X - Blue Danube Waltz
- Y - The Entertainer
- Z - William Tell Overture

CARE & MAINTENANCE

1. Keep the unit clean by wiping it with a slightly damp cloth.
2. Always use crayon on the reusable pages and wipe off with a tissue.
3. Drawing on the board directly is not recommended. If crayon is written on it, wipe it with a tissue or damp cloth. Do not scrub the surface as it could cause damage.
4. Do not use sharp-ended objects to write on the surface of the board.
5. Avoid using excess pressure on the board.
6. Keep the unit out of direct sunlight and away from any direct heat sources.
7. Remove the batteries when the unit is not in use for an extended period of time.
8. Do not drop the unit on a hard surface and do not expose the unit to excess moisture.

TROUBLESHOOTING

If for some reason the program/activity stops working or malfunctions, then please follow these steps:

1. Turn the unit **OFF**.
2. Interrupt the power supply by removing the batteries.
3. Let the unit stand for a few minutes, then replace the batteries.
4. Turn the unit back **ON**. The unit will now be ready to play again.
5. If the unit still does not work, replace with an entire set of new batteries.

If the problem persists, please call our Consumer Services Department at 1-800-521-2010 in the U.S. or 1-877-352-8697 in Canada and a service representative will be happy to help you.

IMPORTANT NOTE:

Creating and developing **Preschool Learning**™ products is accompanied by a responsibility that we at **VTech**® take very seriously. We make every effort to ensure the accuracy of the information which forms the value of our products. However, errors sometimes can occur. It is important for you to know that we stand behind our products and encourage you to call our Consumer Services Department at 1-800-521-2010 in the U.S. or 1-877-352-8697 in Canada with any problems and/or suggestions that you might have. A service representative will be happy to help you.

NOTE:

This equipment has been tested and found to comply with the limits for a Class B digital device, pursuant to Part 15 of the FCC Rules. These limits are designed to provide reasonable protection against harmful interference in a residential installation. This equipment generates, uses and can radiate radio frequency energy and, if not installed and used in accordance with the instructions, may cause harmful interference to radio communications. However, there is no guarantee that interference will not occur in a particular installation.

If this equipment does cause harmful interference to radio or television reception, which can be determined by turning the equipment off and on, the user is encouraged to try to correct the interference by one or more of the following measures:

- Reorient or relocate the receiving antenna.
- Increase the separation between the equipment and receiver.
- Connect the equipment into an outlet on a circuit different from that to which the receiver is connected.
- Consult the dealer or an experienced radio/TV technician for help.